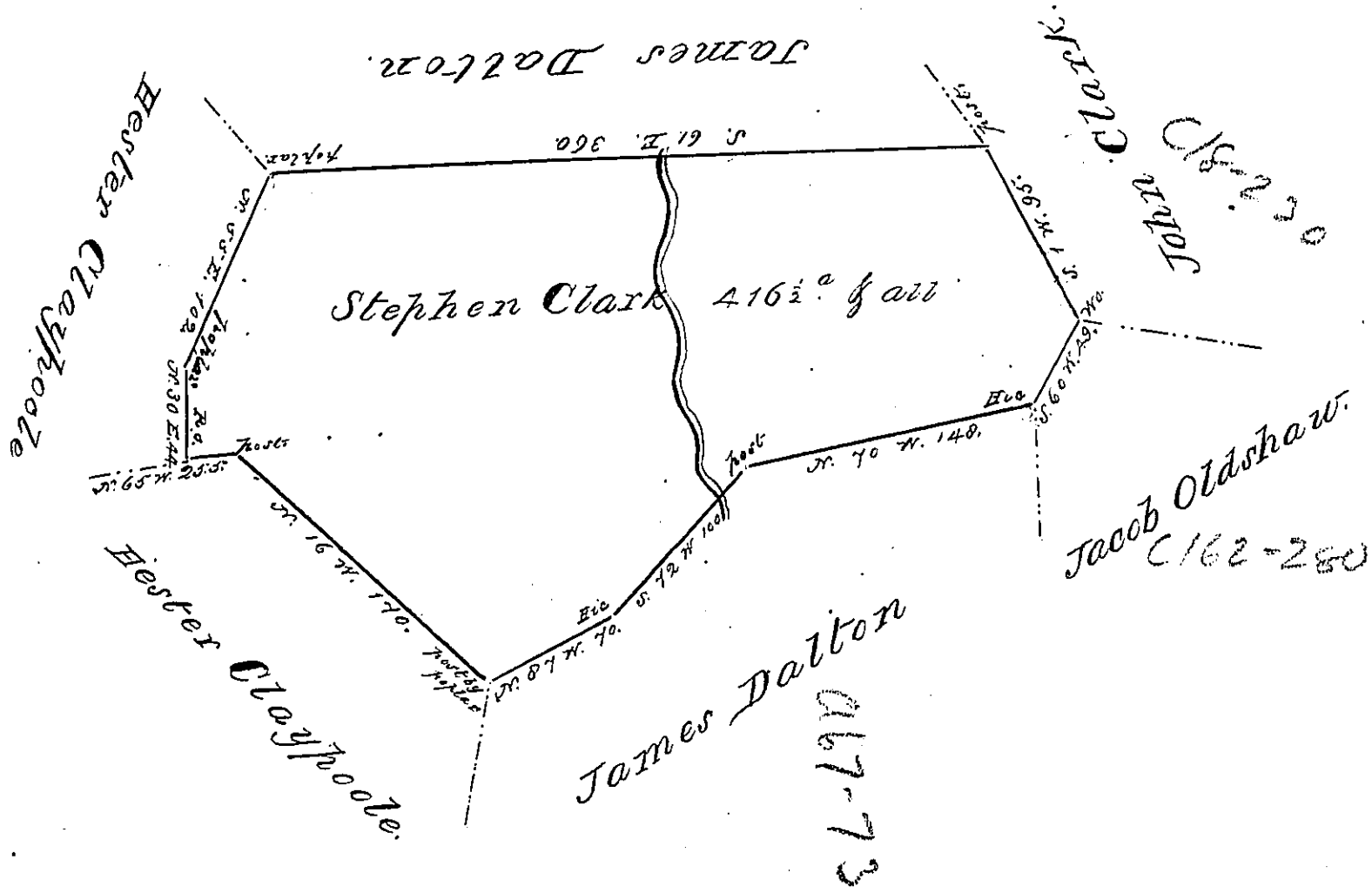


1026-166



Situated on both sides of Bens Creek in
 Quemahoning Township Bedford County
 And Surveyed the 8th of July 1794. In
 pursuance of a warrant dated the 10th
 of February 1794 -

Samuel Proshend, Esq^r.
 Surveyor General

George Woods Jun^r. N.S.

IN TESTIMONY that the above is a copy of the original remaining on file in the
 Department of Internal Affairs of Pennsylvania, made con-
 formably to an Act of Assembly approved the 16th day of
 February, 1833, I have hereunto set my Hand and caused
 the Seal of said Department to be affixed at Harrisburg, this

Nineteenth day of August 1876

Wm. Candler
 Secretary of Internal Affairs